

RECOVERY STARTS HERE.



Phoenix  
House  
Florida

**HOPE.  
HEALING.  
RECOVERY.**



# RECOVERY STARTS HERE.

## ABOUT PHOENIX HOUSE FLORIDA

Phoenix House Florida is a non-profit organization that has been serving the State of Florida for over 25 years.

Our evidence-based treatment approach delivers a superior level of care focused on our patient strengths to meet their recovery needs.

At Phoenix House Florida, each individual is guaranteed the highest quality of care.

We pride ourselves on providing outstanding and accessible substance use treatment to adults and teens in both outpatient and residential settings.

Our goal is to provide treatment to anyone who needs it no matter the ability to pay. We are fortunate to access a wide of funding sources available to help us achieve that aim.

### Our Mission

We are passionate about healing individuals, families, and communities challenged by substance use disorders and related mental health conditions.

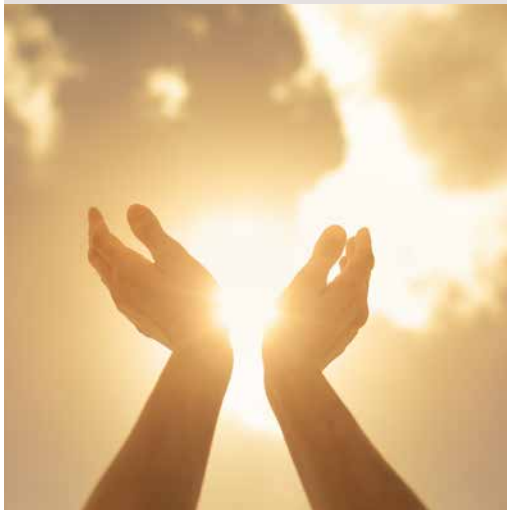
### Who We Are

Phoenix House Florida provides individualized, holistic drug and alcohol addiction treatment, with a legacy spanning over 25 years.

### What We Do

With short-term and long-term care options, we treat those struggling with addiction wherever they need to be – at home or a treatment facility.





### Levels of Care

Residential Treatment  
Intensive Outpatient (IOP)  
Outpatient Services (OP)  
Continuing Care and Aftercare Planning

### What We Treat

Substance Use Disorders - Primary  
Co-Occurring Mental Health Disorders  
Grief and Loss  
Socioeconomic Problems

### Our Insurance Providers

We are an in network provider with most commercial policies and have funding options for those uninsured or underinsured. Medicaid and Managed Medicaid are accepted for Outpatient Services.

### Self-pay Rate

Funding Available for a 30-day residential stay including room and board.

RECOVERY STARTS HERE.



Phoenix  
House  
Florida

# OUTPATIENT SERVICES

FOR ADOLESCENTS & ADULTS

Our clinicians are committed to empowering clients on their recovery journey through a deeply individualized approach to therapy.





## OUTPATIENT SERVICES

### For Adolescents & Adults

#### Core Services

Outpatient Services for Adolescents

Adult Outpatient Services

Assessment and Evaluation

Individual Therapy

Standard Outpatient Programming

Intensive Outpatient Programming

Drug Screening

Psychiatric Services

Medication Assistant Treatment Services

Recognizing that each client's path is unique, our team employs a variety of therapeutic techniques tailored to address not just substance use but also the broader spectrum of co-occurring issues. These may include trauma, family dynamics, and mental health challenges. By integrating different therapeutic modalities, our clinicians provide comprehensive support, helping clients build resilience, gain insights, and develop the skills needed for lasting recovery and overall well-being.

At Phoenix House Florida, each individual is guaranteed the highest quality of care, delivered with professionalism and respect. We pride ourselves on providing outstanding and accessible substance use treatment. Convenient hours make treatment accessible to both working adults and students. Our highly credentialed clinicians develop individualized treatment plans to address each patient's unique needs and personal strengths.

Our goal is to provide substance use treatment to anyone who is in need of treatment. We are fortunate to have access to a wide variety of funding sources available to help us achieve that aim. Most major insurance plans and Medicaid are accepted, and additional payment options, including affordable self-pay rates, are available.



## HEAL AT YOUR HOUSE

### Adult Outpatient Program

Through our adult outpatient program, compassionate care is offered for those struggling with addiction to alcohol, heroin, cocaine, prescription medications, marijuana, over-the-counter drugs, and other substances. We are also prepared to help patients with co-occurring mental health disorders, such as depression, anxiety, attention deficit disorder, and bipolar disorder. Our highly credentialed clinicians develop individualized treatment plans to address each patient's unique needs and personal strengths.

Services include immediate assessments, drug testing, and referrals to residential care as warranted, as well as life-skills training, health education, family reintegration assistance, and continuing care to help ensure sustained recovery.

### Adolescent Outpatient Program

Through our partnership with the Derek Jeter Center, we offer customized outpatient programs for age 13 and older. We focus on healthy and positive life choices and encourage clients to identify and maximize their own individual strengths. The program's emphasis on family involvement helps mend family relationships while healing the wounds inflicted by drugs and alcohol.

This program offers evidenced-based treatment, cognitive behavioral therapy sessions, motivational therapy techniques, health education seminars, life-training workshops, active learning opportunities, and family and peer support. Here, youth can regain control of their lives and continue down a path of hope, healing, and recovery.





## LOCATIONS

### Brandon

510 Vonderburg Dr. #301 Brandon, FL 33511

### Rome

2103 N Rome Ave. Tampa, FL 33607

## INSURANCE

We accept most commercial and medicaid insurance.  
Reach out to our admissions office to see if we accept your insurance.

OUTPATIENT SERVICES: ADULTS & ADOLESCENTS

RECOVERY STARTS HERE.



# RESIDENTIAL SERVICES

FOR ADULTS

Nestled in the scenic hills of Marion County, our residential substance use disorder treatment program helps adults find the inner strength to sustain recovery.





## RESIDENTIAL SERVICES

### For Adults

#### Core Services

Prevention and Education Services  
Assessment and Evaluation Services  
Residential Services for Adults

### HEAL AT OUR HOUSE

Located in the rolling hills of Marion County, Phoenix House Florida's adult residential program provides gender-specific substance use treatment for men and women, including treatment for co-occurring behavioral health issues. Our services include individual treatment planning, specialized group therapy, life-skills training, health education, family reintegration assistance, and services to help ensure a sustained recovery.

Designed to support a well-rounded treatment experience, our residential facility features a swimming pool, tennis and volleyball courts, and workout equipment. Withdrawal management services are available for both men and women, and treatment length is tailored to meet each patient's individual needs. The Murray Center for Women, named in honor of Nancy C. and Raymond E. Murray, long-time benefactors of Phoenix House Florida, is a separate residential program designed exclusively for women providing trauma-informed, gender-specific treatment services.

At Phoenix House Florida, each individual is guaranteed the highest quality of care, delivered with professionalism and respect. We pride ourselves on providing outstanding and accessible substance use disorder treatment. Phoenix House Florida is accredited by the Commission on Accreditation of Rehabilitation Facilities, CARF, a nationally recognized standard of excellence.

Most major insurance plans are accepted, and additional payment options, including self-payment, are available.




### Activities

Therapeutic Activities  
Skill Building  
Yoga  
Swimming  
Volleyball  
Gym  
Softball  
Pickleball  
Tennis  
Library  
Walking Trails

### Learn More

Call us for more information

 (813) 881-1000

RESIDENTIAL SERVICES FOR ADULTS





## INSURANCE OPTIONS

Our experienced staff is skilled at working with all types of insurance providers to help you access the treatment you need. Phoenix House Florida is an in-network provider for most major insurance carriers.

### Medicaid Plans

Please note Medicaid and managed Medicaid policies are only accepted in our Brandon Outpatient programs.

Phoenix House Florida is an in-network provider for managed care programs and Medicaid. Our experienced staff is skilled at working with all types of insurance providers to help you access the treatment you need.

### Alternative Funding

We offer many different types of funding options, including an affordable self-pay rate, the Hillsborough County Health Plan and other types of state-supported funding.

We accept cash, check, and all major credit cards. We also will provide you with all the information on a program that could possibly help to fund your treatment, if you qualify.

RECOVERY STARTS HERE.



# MAKE A REFERRAL

OUR STEP-BY-STEP PROCESS

It is important to start the process as soon as your loved one is ready for treatment. Our step by step referral process makes it easy so your loved one can start healing immediately.





## ASSESSMENTS AND TREATMENT REFERRALS FOR A LOVED ONE

*Our Referral Process, Step by Step*

### 1. Call the Admissions Team

Call the Admissions Team at (813) 881-1000, option one. An Admissions Team member will provide a free, confidential brief screening and schedule an assessment with a member of our clinical team to determine the appropriate level of care. Phoenix House Florida's counselors combine clinical expertise with compassion to help determine the best level of care at one of our treatment centers.

### 2. Clinical Assessment

After the referral and initial screening, we will continue to the scheduled assessment appointment at the designated Phoenix House Florida location. During this process, the counselor will conduct a comprehensive clinical evaluation (American Society of Addiction Medicine (ASAM) assessment) and will determine the appropriate level of care. We will provide the necessary information to prepare for admission to the designated program.

### 3. Admission/Intake

Once the appropriate level of care is determined, we will begin the admission/intake process. During this process, our medical team will conduct a medical evaluation and our clinical staff will also conduct an evaluation to form an effective treatment plan that will include determining the estimated length of stay in the program.



## ASSESSMENTS AND TREATMENT REFERRALS FOR A LOVED ONE

*Our Referral Process, Step by Step (continued)*

### 4. Treatment Commences

Your loved one's treatment experience will be planned, coordinated and managed by a compassionate, dedicated treatment team of clinical and medical experts. Each treatment team can include a combination of Physicians, Nurses, Psychiatrists, Licensed Addiction Experienced Counselors, Clinical Technicians and Clinical Case Managers to ensure your loved one receives comprehensive care and effective treatment to build the essential skills and methods needed to sustain long-term recovery. Family involvement is encouraged and essential for a successful treatment and recovery journey.

### 5. Release of Information

If your loved one chooses; they can complete a signed release of information so that you can receive the necessary information or communicate with the clinical team as needed throughout treatment.

### 6. Continuum of Care and Alumni

Once treatment is complete, the recovery process truly begins. Long-term recovery is a lifelong journey. Actively engaging in supportive resources and practicing self-care can continue the process of rebuilding healthy, loving, and supportive relationships while in recovery.

Assessments and Treatment Referrals From Our Community Partners and Phoenix House Florida's Admissions Team combines years of experience with compassion to help determine the best treatment program for your client. With a simple phone call or email, you can complete our streamlined, thorough process from assessment to admission. Our team partners with you and the client throughout the admission and treatment process to position him or her for successful treatment and long-term recovery. Our team also helps maximize insurance benefits to help secure minimal out of pocket costs.





### Release of Information

If you require involvement throughout the assessment, admissions, treatment and discharge process, the team at Phoenix House Florida will obtain a patient release of information, permitting ongoing communication with you throughout the patient's treatment journey.

### Admissions

Once the treatment referral is made, your client will begin the assessment and if appropriate, admissions process on-site at the designated Phoenix House Florida treatment location. With a release of information, admissions team member can confirm admission and help arrange your preferred protocol for communication with the assigned primary counselor and case manager.

### Scan the QR Code to start a referral



RECOVERY STARTS HERE.



# NEW FACILITY

EXPANDING OUR SERVICES

Phoenix House Florida is proud to announce the opening of its brand new 20-bed residential substance use facility in Ocala, Florida.



## EXPANDING OUR SERVICES

*Introducing Our New Facility in Ocala, Florida*

### To Better Serve The Community

Phoenix House Florida is proud to announce the opening of its brand new 20-bed residential substance use facility in Ocala, Florida. Our facility is specifically designed to provide innovative substance use treatment services to adult males aged 18 and over.

At Phoenix House Florida, we are committed to providing specialized substance use treatment services tailored to meet the unique needs of our clients. Our team of experts will work with you to design an individualized holistic approach based on your clinical assessment.

### Accepting Participants March 2025

Call our Business Development Team Members for more information

- ☎ Lisa Beck - (863) 267 6637
- ☎ Carly Sullivan - (813) 422 1059
- ☎ Stephanie Krager - (813) 459 5430

MAKE A REFERRAL



## SERVICES & ACTIVITIES

### Services

24/7 Quality Care  
Co-Occurring Mental Health  
Drug and Alcohol Assessment  
Medical Treatment  
Psychiatric Medical Treatment  
Gender-Specific

### Therapy & Education

Individual and Group Therapy  
Substance Use Prevention & Education  
Medication Management  
Family and Couple Therapy  
Follow Up Care  
AA / NA Meetings

### Activities

Therapeutic Activities  
Skill Building  
Art Therapy / Art Room  
Group Rooms  
Pool  
Yoga  
Library  
Pickleball & Tennis  
Walking Trails  
Softball

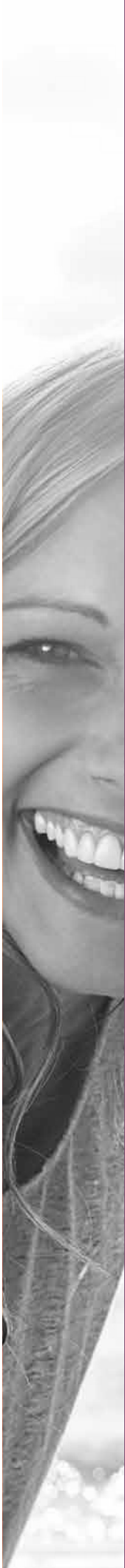
### Payment

Self pay \$5,000 per month  
Credit cards and Money orders accepted

MAKE A REFERRAL



RECOVERY STARTS HERE.



# 2025 UPCOMING FACILITIES

HILLSBOROUGH COUNTY

Phoenix House Florida works to empower individuals to experience their personal strengths and help them discover new ways to manage the mental, physical, and emotional aspects of addiction.



## 20-BED RESIDENTIAL DRUG REHABILITATION FACILITY

*Focused on Women Veterans*

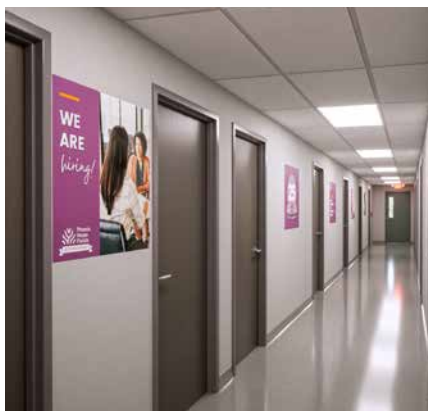
### The Problem

Increasing numbers of women Veterans are seeking treatment for substance use disorders (SUD) — with more than half of those seeking treatment for alcohol use. Women Veterans may face unique challenges from military service that can lead to substance use, such as chronic pain, post-traumatic stress disorder (PTSD), or military sexual trauma (MST) and therefore require a tailored approach to their care. **The shortage of facilities and available beds that serve primarily women and women Veterans, has not improved and the need is expected to continue, and grow.**

### Our Solutions

Phoenix House Florida is proposing a new **Residential Drug Rehabilitation Facility focused on women Veterans** which will include 20 private rooms, a patient lounge with a full kitchen, a vocational center, and a playground, among other features. This facility will enable patients vital access to a continuum of care, mental health and substance abuse treatment, peer support, supportive housing, family involvement and provide resources to the community.

MAKE A REFERRAL





### Outcomes

Phoenix House Florida is the leading provider for the Florida Department of Corrections in Citra. This facility will bring available care and expertise to **Hillsborough County where the Opioid death rate is one of the highest in the state**. The facility will provide:

- Access to integrated behavioral health and addiction treatment for women by increasing access to medication management, trauma-informed care, and dedicated track for women Veterans that will directly impact physical health resulting from less drug use and healthier lifestyles.
- Access to timely integrated primary and behavioral health care for Veteran women and women struggling with mental illness and SUD treatment is also paired with vocational and career development assistance resulting in a higher capacity to lead productive and fulfilling lives leading to sustained employment.

MAKE A REFERRAL





## 85-BED RESIDENTIAL PROGRAM

*Focused on a Mixed Population*

### The Problem

Hillsborough County Medical Examiner's Office reports 549 overdose deaths in 2023. This averages **46 individuals** month to month. January 2024 - July 10th 2024 reports **109 confirmed fatal overdoses with 162 cases pending toxicology**. Additionally, Florida Health Charts - Substance Use Dashboard reports **2,691 Emergency Medical Service (EMS) Responses to a Suspected Opioid-involved Overdose in 2023, with a total of 7,466 to a Suspected Overdose Including Opioid**. This averages to around 846 drug overdoses per month. It is clear that fatal overdose cases have skyrocketed in Hillsborough County over the last decade.

### Our Solutions

Phoenix House Florida seeks to establish an **85-bed residential program meeting the needs of a mixed population, with 75 beds for men and 10 for women**. The designed length of stay will be 60-120 days. The facility will offer programming seven days a week utilizing a variety of different resources and therapeutic interventions treating the whole patient with a continuum of services, including care for co-occurring behavioral health issues in collaboration with community partners. Daily programming will be robust, with groups lasting well into the evening hours. The programming will also utilize a robust case management element to promote reintegration and functionality within the community.

MAKE A REFERRAL





### Outcomes

Upon completion of the program, individuals will leave with employment opportunities and housing options that will support and promote their growth in recovery.

This facility will provide:

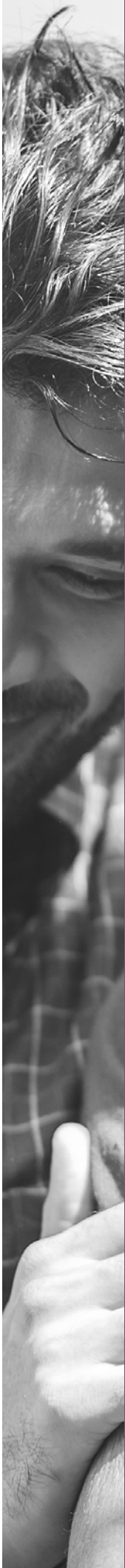
- Access to integrated behavioral health and addiction treatment by increasing access to medication management, and trauma-informed care.
- Access to timely integrated primary and behavioral health care for individuals struggling with mental illness and SUD treatment.

### A Message From Derek Jeter

*Turn 2 Foundation, Inc. Founder*

“What Phoenix House has accomplished over the years is remarkable. Phoenix House continues to change lives and we’re dedicated to being partners for years to come.”

RECOVERY STARTS HERE.



# STAY CONNECTED


 [fladmissions@phoenixfl.org](mailto:fladmissions@phoenixfl.org)

 [www.phoenixfl.org](http://www.phoenixfl.org)

 (813) 881-1000

 @PhoenixHouseFL

 @phoenixhouseflorida

 phoenix-house-florida