

THE FLORIDA MESSENGER

Official newsletter of Phoenix House Florida



A Message from the CEO

As we flew through May and now head into June and the start of summer, I am reminded of how honored I am to work with so many dedicated and professional staff here at Phoenix House Florida. The strength and resilience the staff have shown during this time of crisis is remarkable and a true reflection of our mission.

We continue to follow the guidelines of the Governor and slowly start to open during identified Phases, while still protecting our staff and patients at both of our locations in Brandon and Citra. We are excited to get back to the new normal and continue our service to the community.

Thank you for your continued support of Phoenix House Florida, stay safe and enjoy summer!

Maria Alvarez, President & CEO



Check out our new video!



In this month's issue:

- A MESSAGE FROM THE CEO
- AFFORDABLE TREATMENT
- STAFF SPOTLIGHT
- JOB OPENINGS
- FACILITY UPGRADE
- MEN'S HEALTH MONTH

Saving Lives With Affordable Treatment

Phoenix House Florida is committed to providing support to our communities during this difficult time of COVID-19 and the rise of unemployment. We are offering a discount of 33% to those in need of residential substance use treatment. We have many plans and options available, in addition to other funding sources that could assist with the cost of providing life saving treatment.

Please reach out today!

With a legacy spanning nearly 30 years, PHFL is proud to offer our community during the coronavirus and unemployment crisis, a discounted rate to our residential program.



33%
OFF

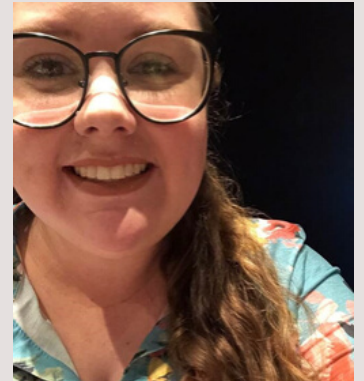
ON SELF-PAY
RESIDENTIAL
TREATMENT

WWW.PHOENIXFL.ORG
FLADMISSIONS@PHOENIXFL.ORG
813-502-1777

Staff Spotlight

MIRANDA DELAWARE, BS, COUNSELOR

Miranda is a counselor at our Citra residential program and was chosen employee of the month. Miranda has a Bachelor's degree and has worked at PHFL for nearly one year, beginning her role as tech and quickly moving up to a counselor role. Miranda inspires the clients to embrace their own recovery and empower them to be successful. Miranda states that she "started my journey to counseling simply because I wanted to help people and give back in any way that I could. The Phoenix House has given me the opportunity to begin my career in helping individuals regain their lives back." Miranda is a team player and chips in wherever needed without prompting. Miranda is an asset to the Citra facility and the agency as a whole!



"I'm eternally grateful that I'm able to help in any way that I can."



**GO ONLINE TO APPLY OR FIND OUT MORE:
[HTTPS://WWW.PHOENIXFL.ORG/CAREERS](https://www.phoenixfl.org/careers)**

Brandon Outpatient

- Billing Specialist

Citra Residential

- Clinical Technician (FT)
- Clinical Technician (Per Diem)
- Licensed Practical Nurse (FT)
- Substance Abuse Counselor (FT)

Company Spotlight

Upgrades to our residential facility grounds

We recently made a few upgrades to our residential facility. The grounds landscaping updates included some new plants, new mulch, new wood planks. The new laundry area was created and updated to empower clients to do their own laundry and add a sense of personal responsibility. The new equipment was provided by a local company.

Thank you to our amazing Facilities Manager, John Brown! Great work John!!



Men's Health Month

June is Men's Health Month and this month is dedicated to raising awareness of health disorders and encourage early detection of disease among men. In recognition of this month, we look specifically at addiction and co-occurring mental health disorders among men. The National Institute on Drug Abuse reports that men are more likely than women to use almost all types of illicit drugs. Men also start using drugs at an earlier age and abuse drugs more often than women do. The highest rate of illicit drug use is among young adult men, and the most common illicit drug used is marijuana. According to SAMHSA's 2008 National Survey of Drug Use and Health (NSDUH), young adult men 18 to 25 years of age are also more likely to drink alcohol (64.3 percent) than their female counterparts (58.0 percent) (SAMHSA 2009). While women tend to become addicted to substances more easily than men, addiction tends to become more severe in men.

Greater numbers of men than women continue to be treated in a variety of behavioral health settings. Phoenix House Florida understands current social expectations, how clients view themselves, the role that substances of abuse currently play in men's lives and how we can improve men's engagement in and outcomes for treatment. The fact is that help is available. Our exceptional and highly trained staff can help men and their families choose the treatment options best for each situation.